

FORGE APP **TUTORIAL**

A GUIDE TO:

1. MAP TOOLS

**2. ACCESSING OFFLINE
MAPS**

**3. TRAIL SEGMENT
DETAILS**

**4. POINT OF INTEREST
DETAILS**

MAP TOOLS

1/3

ALIGN MAP NORTH

AUTOMATICALLY ORIENTATE MAP NORTH.



RETURN TO HOME

AUTOMATICALLY ZOOM TO THE DEFAULT VIEW OF THE MAP.



LOCATE TO CURRENT POSITION

SHOW AND CENTERS YOUR SCREEN TO YOUR CURRENT GPS LOCATION.



SEARCH

FIND SPECIFIC TRAILS, TRAILHEADS AND POINTS OF INTEREST.



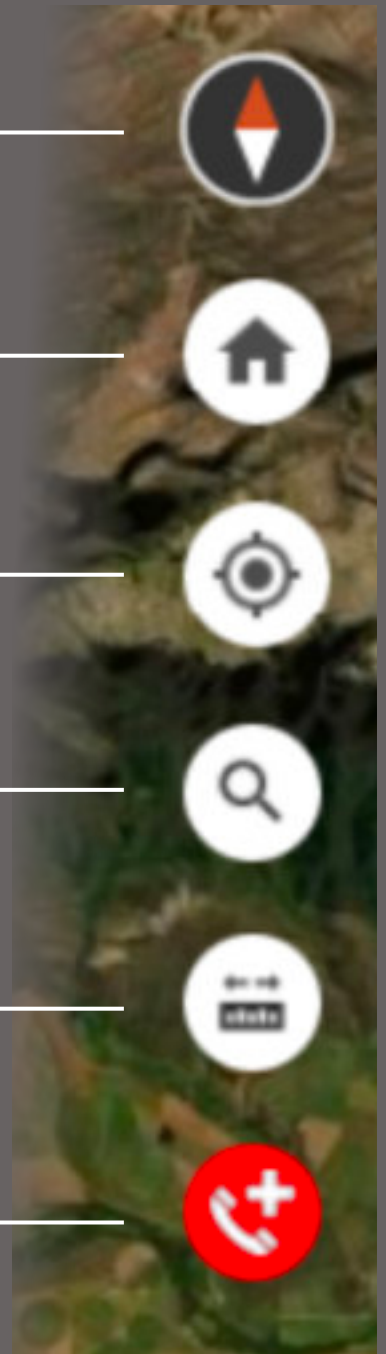
MEASURE TOOL

DETERMINE A DISTANCE, AREA OR GET THE EXACT CO-ORDINATES OF A LOCATION.



CALL EMERGENCY SERVICES

OPEN A LIST OF RELEVANT EMERGENCY CONTACTS AND CALL DIRECTLY FROM THE MAP.



MAP TOOLS

2/3



MAP INFO

MAP INFORMATION

INCLUDING:

RESERVE DESCRIPTION,

OPENING HOURS,

ENTRANCE FEES,

FACILITIES AND CONTACT INFORMATION,

LINK TO NAVIGATE TO RESERVE WITH
GOOGLE MAPS.



LAYERS

LAYERS

TOGGLE THE VISIBILITY OF DIFFERENT
MAP ELEMENTS, INCLUDING SPECIAL
LAYERS SUCH AS DOG WALKING AND
MOUNTAIN BIKING.

Earthstar Geographics

Powered by Esri



MAP INFO



LAYERS



LEGEND



BASE MAPS



BOOKMARKS

MAP TOOLS

3/3



LEGEND

LEGEND

DESCRIPTION OF POINTS-OF-INTEREST, TRAIL TYPES AND WARNINGS.



BASE MAPS

BACKGROUND MAP

CHOOSE FROM A LIBRARY OF MAPS.



BOOKMARKS

BOOKMARKS

ZOOM INTO PLACES OF INTEREST.

Earthstar Geographics

Powered by Esri



MAP INFO



LAYERS



LEGEND



BASE MAPS

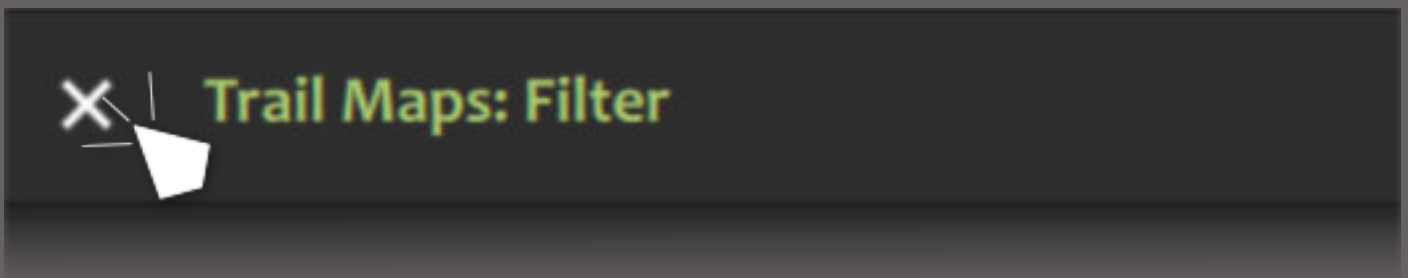


BOOKMARKS

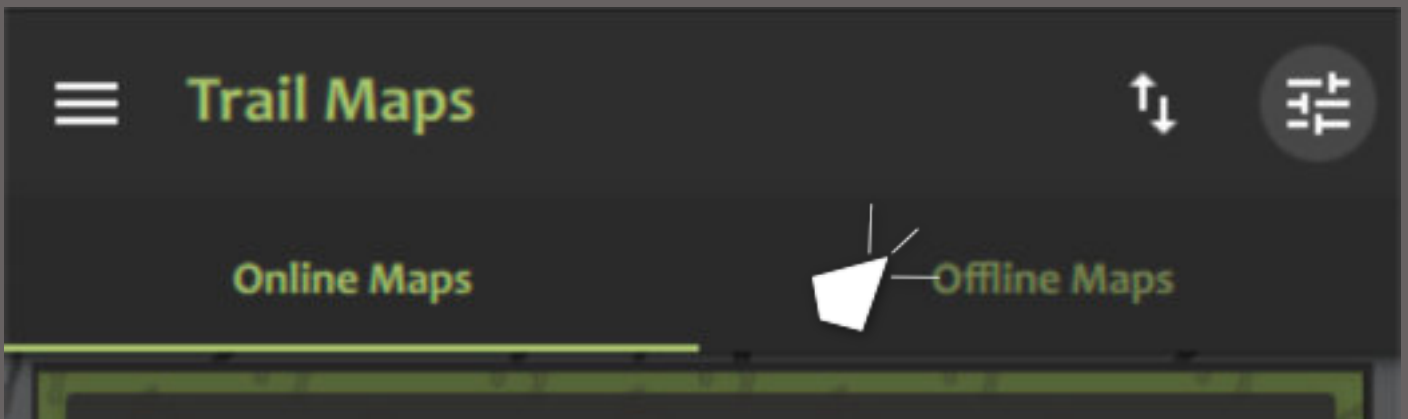
ACCESSING OFFLINE MAPS

FROM THE TRAIL MAPS FILTER PAGE:

1. EXIT THE FILTER PAGE.



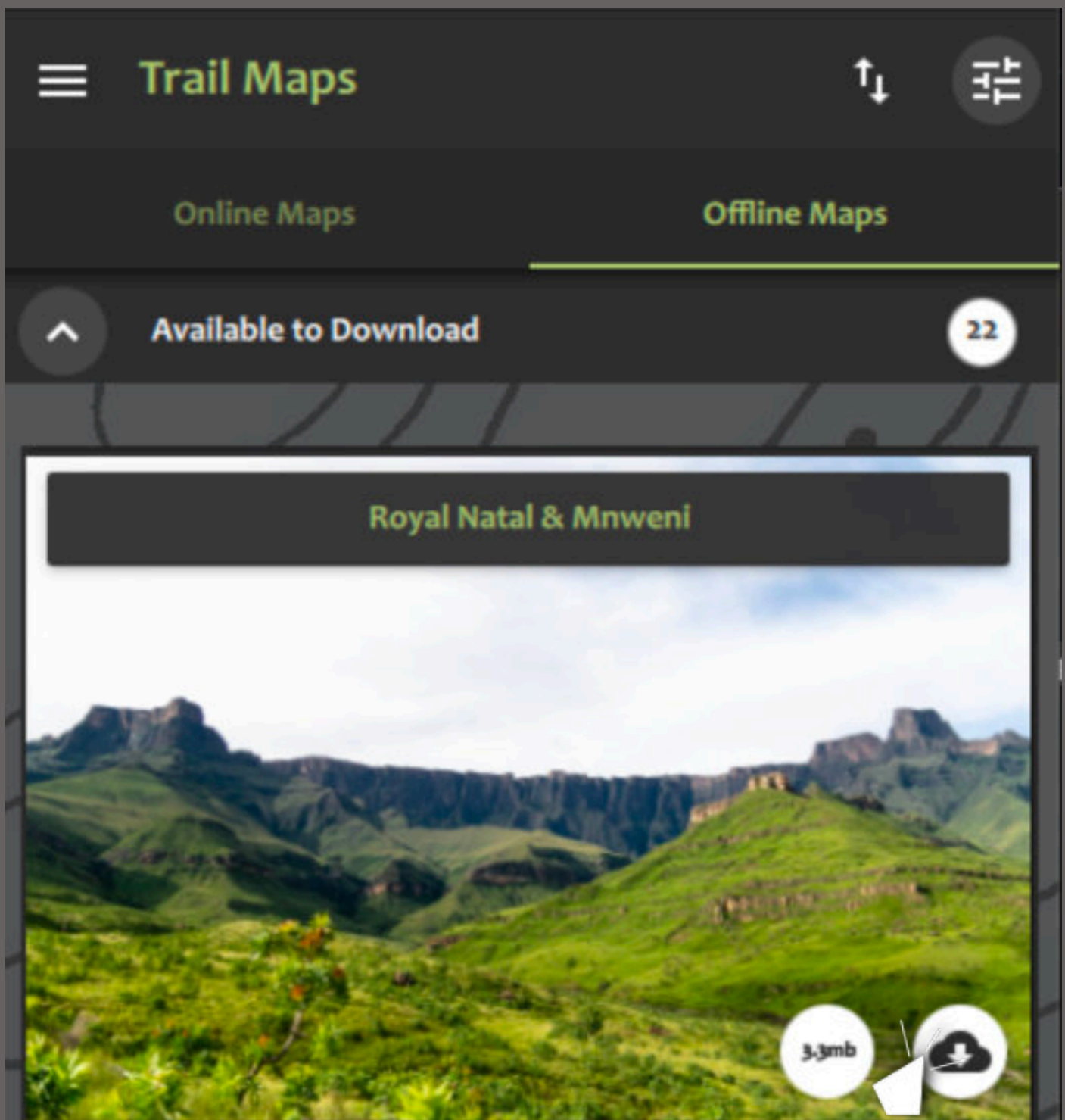
2. NAVIGATE TO 'OFFLINE MAPS'.



NOTE: YOUR DEVICE WILL BE FORCED TO STAY AWAKE DURING THE DOWNLOAD PROCESS. DO NOT MINIMIZE THE FORGE APP OR TURN OFF YOUR SCREEN.

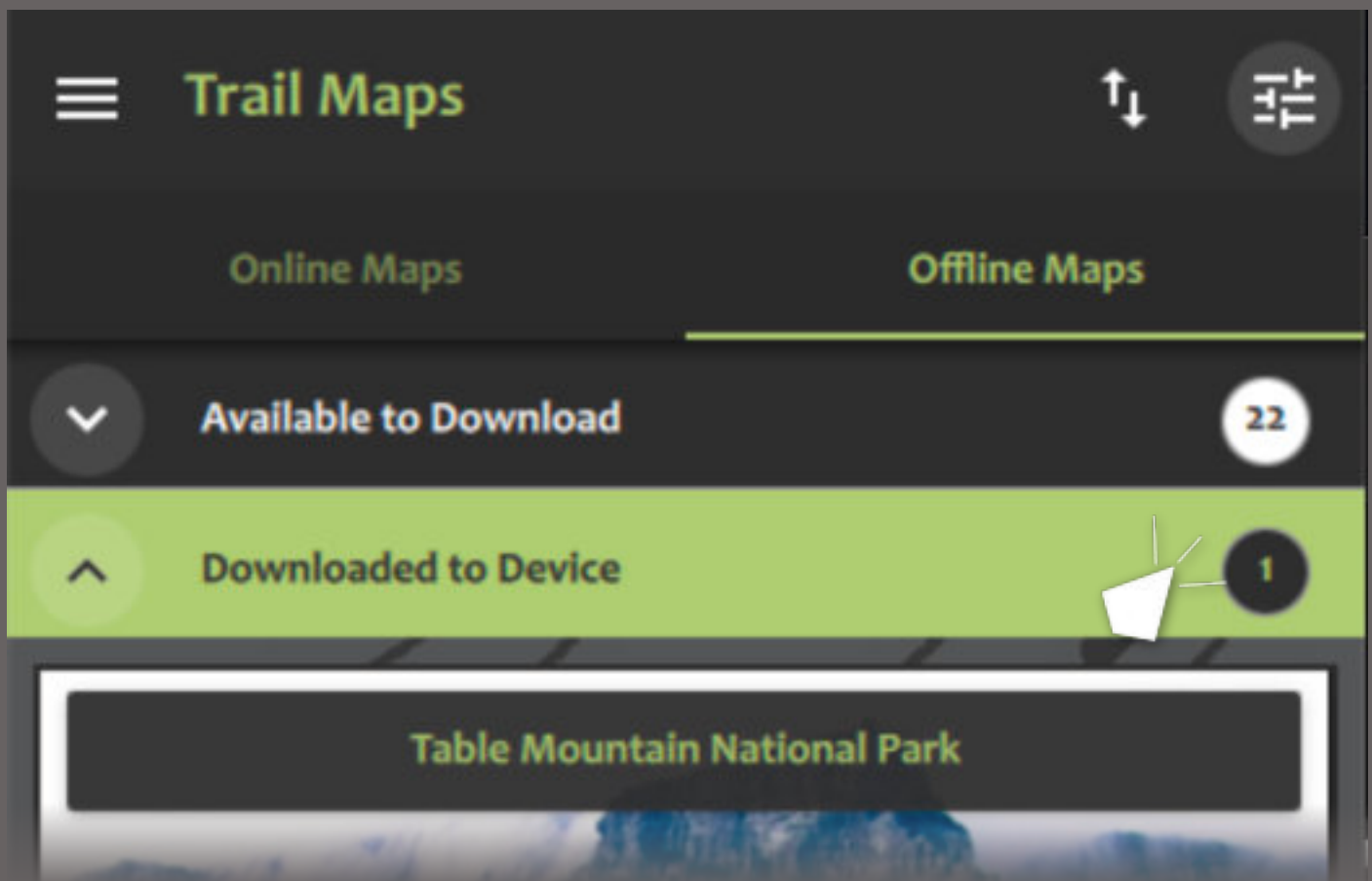
ACCESSING OFFLINE MAPS

3. SELECT YOUR DESIRED MAP IN THE 'AVAILABLE TO DOWNLOAD' TAB AND CONFIRM DOWNLOAD.



ACCESSING OFFLINE MAPS

4. ONCE DOWNLOAD IS COMPLETE THE MAP WILL BE AVAILABLE IN THE 'DOWNLOADED TO DEVICE' TAB.



5. YOU CAN NOW ACCESS YOUR DOWNLOADED MAP WITHOUT CELL-PHONE NETWORK UNDER 'DOWNLOADED TO DEVICE'.

NOTE: WHEN IN LOW-SIGNAL ENVIRONMENTS, OFFLINE MAPS WORK BEST IN AIRPLANE MODE.

TRAIL SEGMENT DETAILS

1/5

CLICK ON A
SEGMENT OF
TRAIL TO FIND
OUT MORE
ABOUT IT.

(CONTINUED ON
NEXT PAGE)

FOR FULL DETAILS
VISIT [FORGESA.COM/
USING-FORGE-MAPS](https://forgesa.com/using-forge-maps)



TRAIL SEGMENT DETAILS

2/5

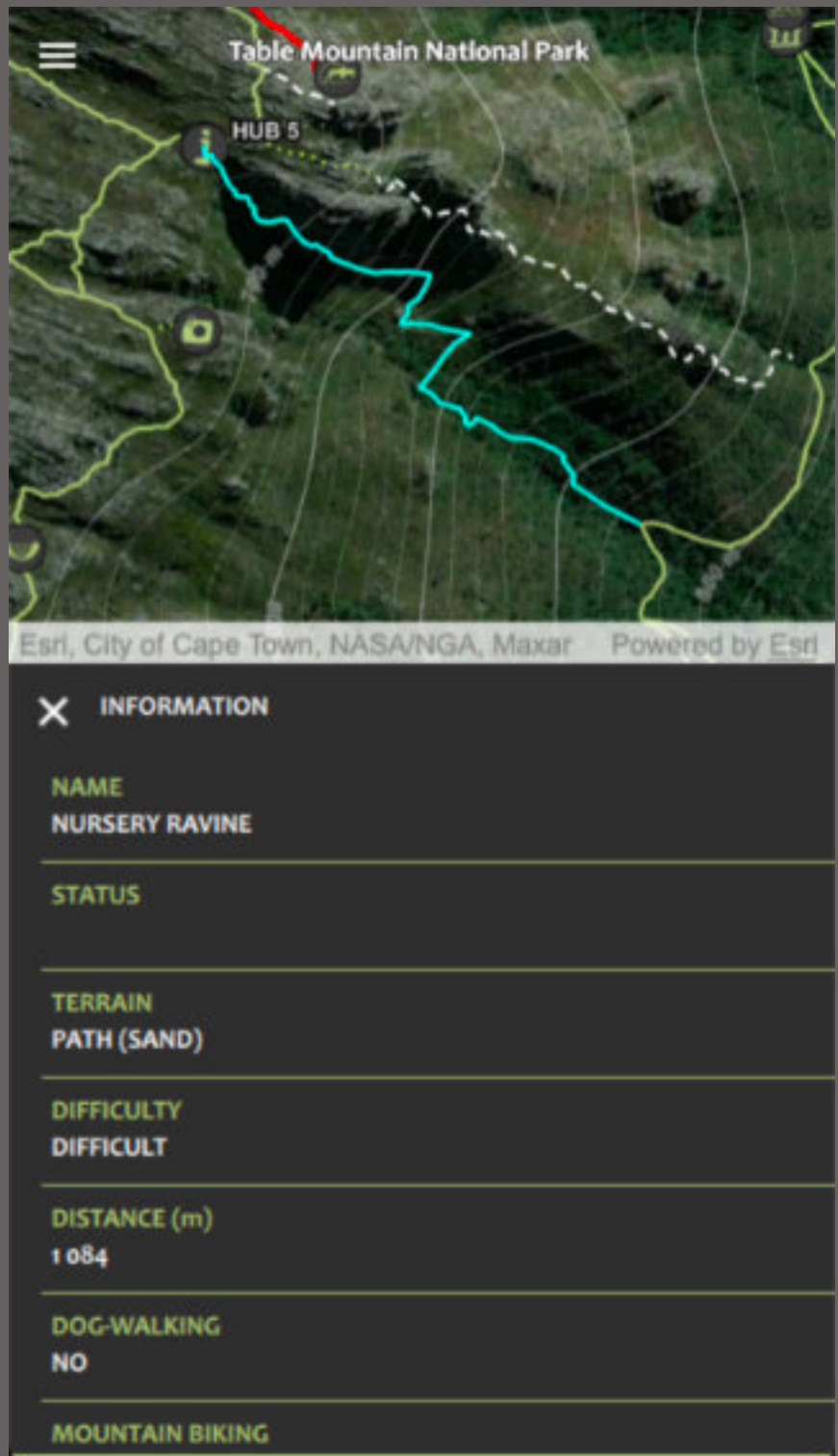
TRAIL DETAILS INCLUDES:

- NAME:

THE OFFICIAL NAME OF THE PATH/TRAIL (IF KNOWN).

- TERRAIN:

- ROAD (PAVED / SAND);
 - PATH (PAVED / SAND / BOARDWALK);
 - ROCK SCRAMBLE
 - WAY-TO-GO (I.E. NOT OFFICIAL OR DISCERNIBLE PATH)
 - CLOSED / NO ENTRY
- DIFFICULTY
 - EASY;
 - MODERATE;

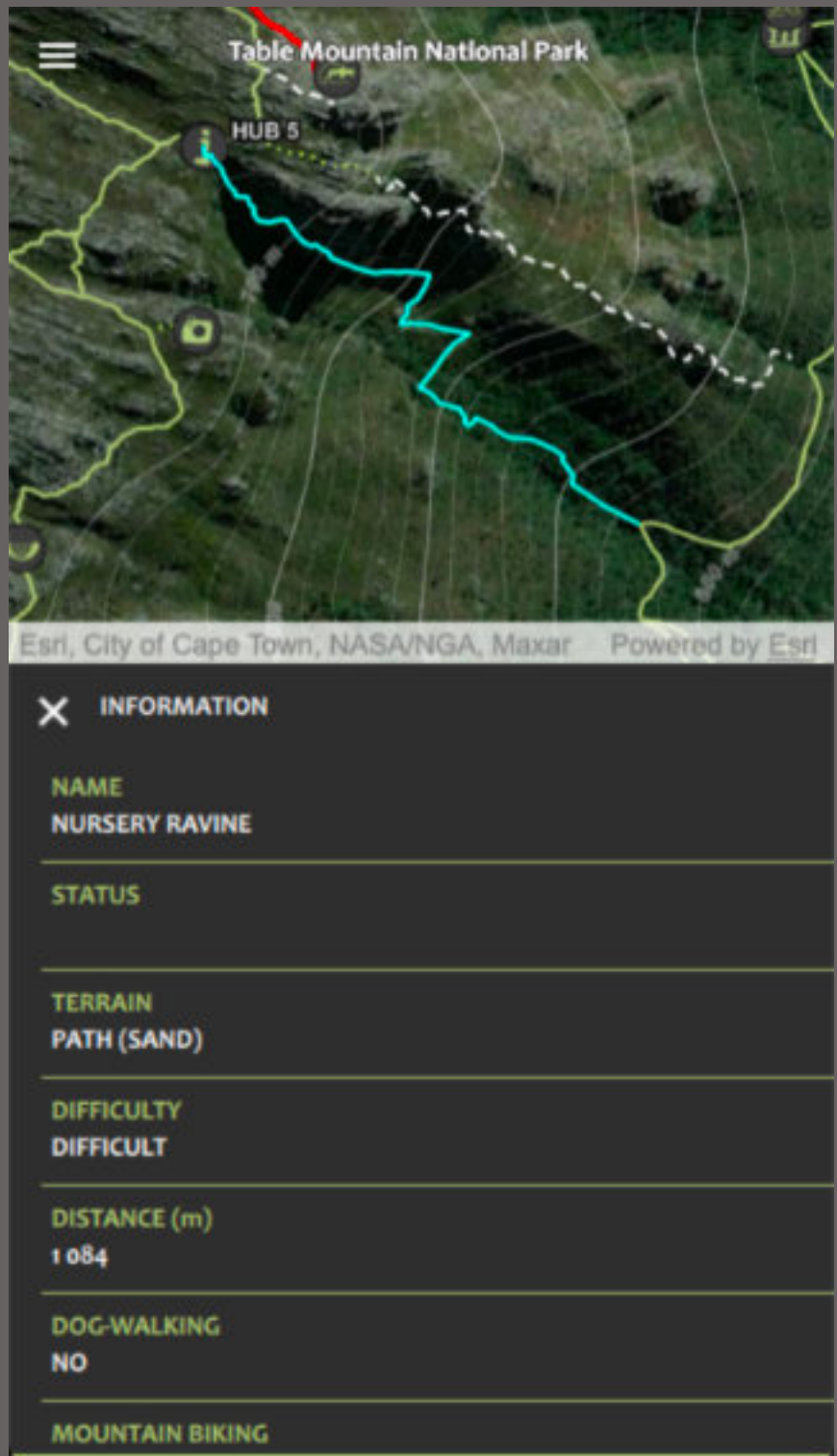


TRAIL SEGMENT DETAILS

3/5

- DIFFICULTY CONT.

- STRENUOUS;
- DIFFICULT (VERY STEEP);
- EXTREME (EXCEPTIONALLY STEEP);
- TECHNICAL - A (VERTICAL OR NEAR-VERTICAL, NO ROPES REQUIRED. E.G. WOODEN/CHAIN LADDERS);
- TECHNICAL - B (VERTICAL OR NEAR VERTICAL, USE OF ROPES AND PROTECTIVE EQUIPMENT REQUIRED BY MOST) ;
- TECHNICAL - X (ROCK CLIMBING OR ABSEILING, RECOMMENDED FOR EXPERIENCED MOUNTAINEERS ONLY);



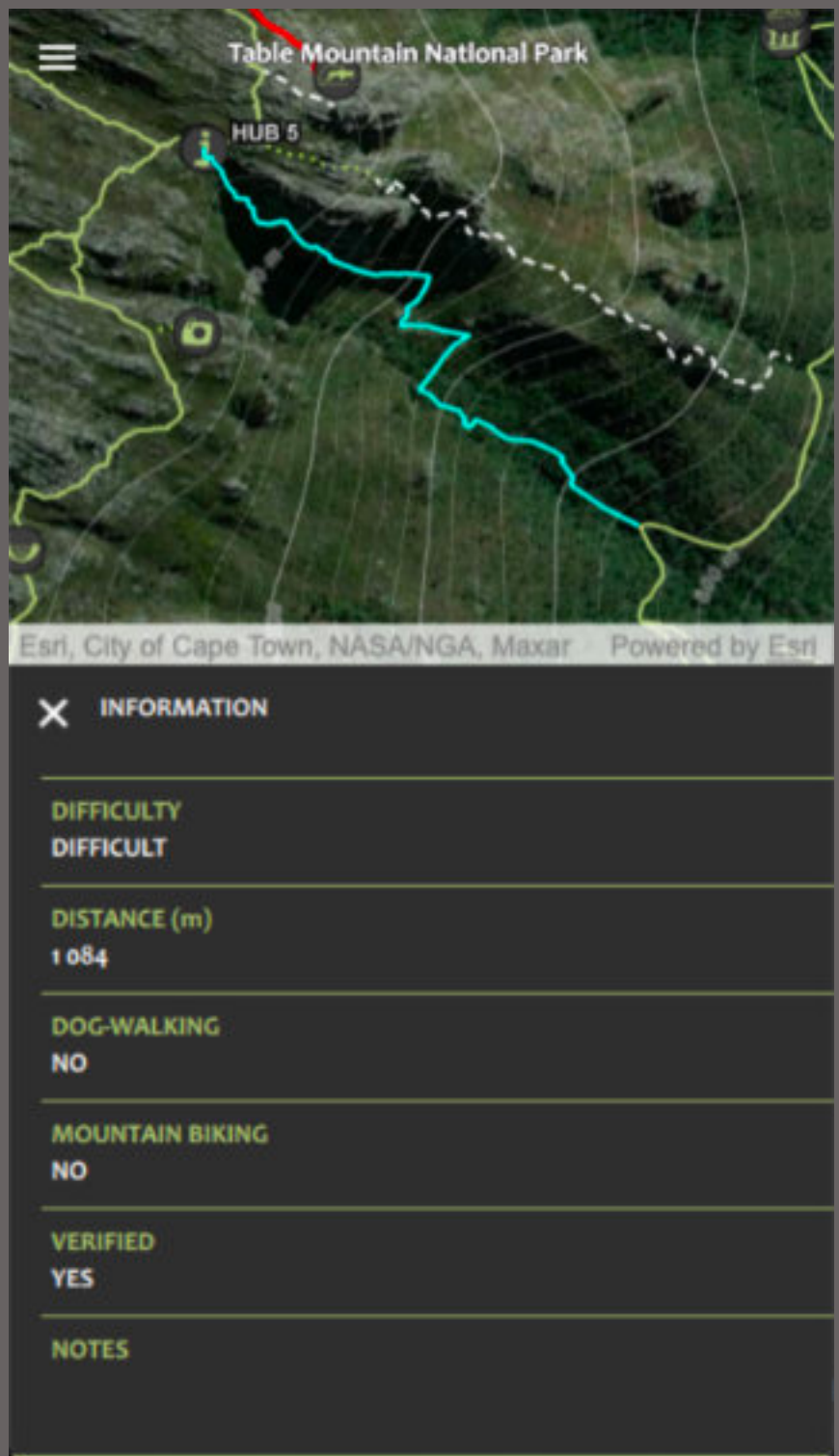
TRAIL SEGMENT DETAILS

- DOG-WALKING

- YES (PERMIT MAY BE REQUIRED);
- NO (NOT RECOMMENDED AND/OR ALLOWED)
- SPECIAL PERMIT (AS GRANTED BY MANAGEMENT AUTHORITY IN SPECIAL WILDERNESS ZONES).

- MOUNTAIN BIKING

- YES (NO PERMIT REQUIRED)
- NO
- PERMIT REQUIRED



TRAIL SEGMENT DETAILS

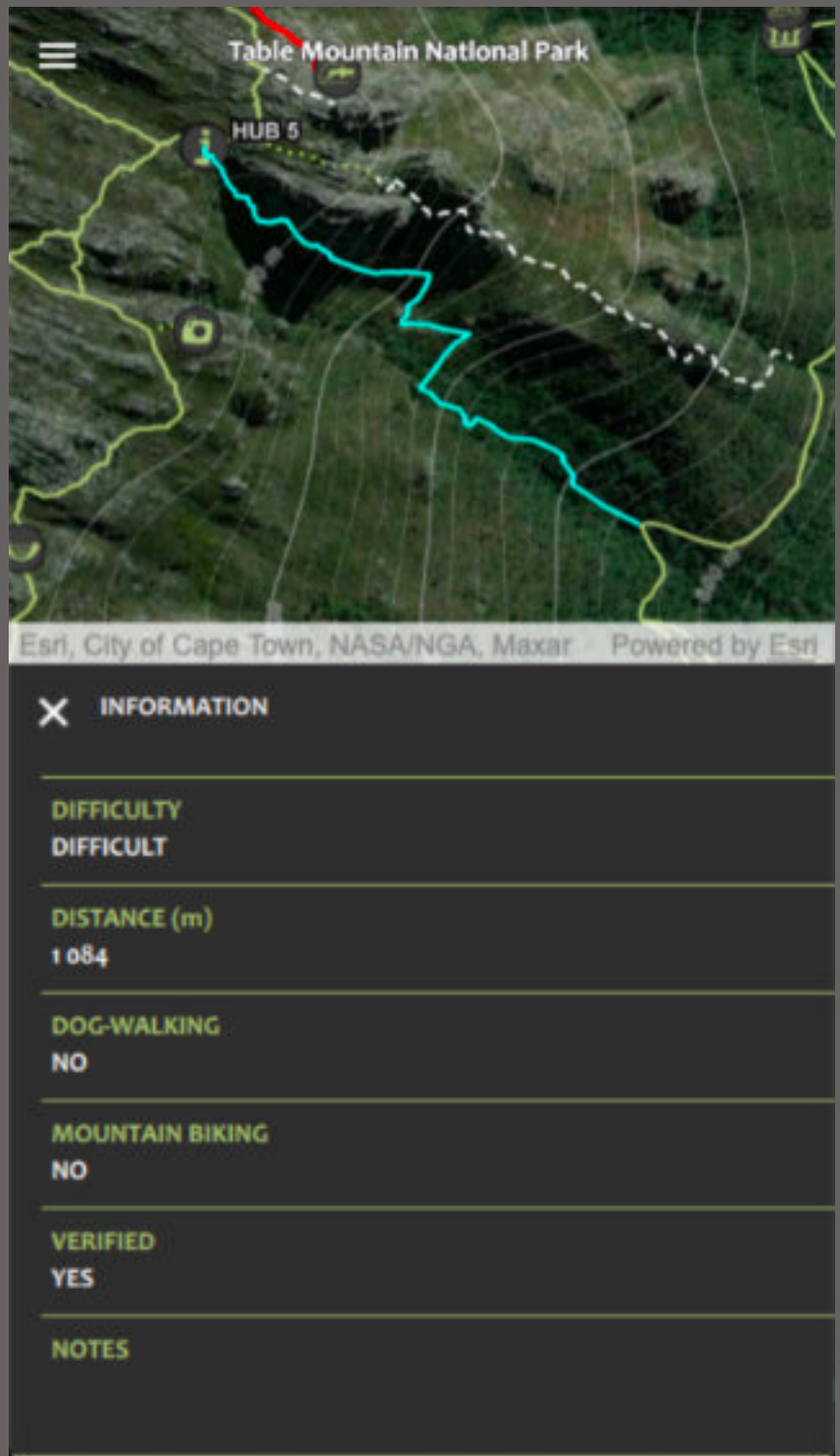
5/5

- VERIFIED

- FORGE TEAM OR CONTRIBUTOR HAS WALKED/CYCLED THE SEGMENT PERSONALLY.

- NOTES

- WARNINGS (E.G. 'HIGH WINDS POSSIBLE ETC.) OR OTHER USEFUL INFORMATION (E.G. REASON FOR PATH CLOSURE).

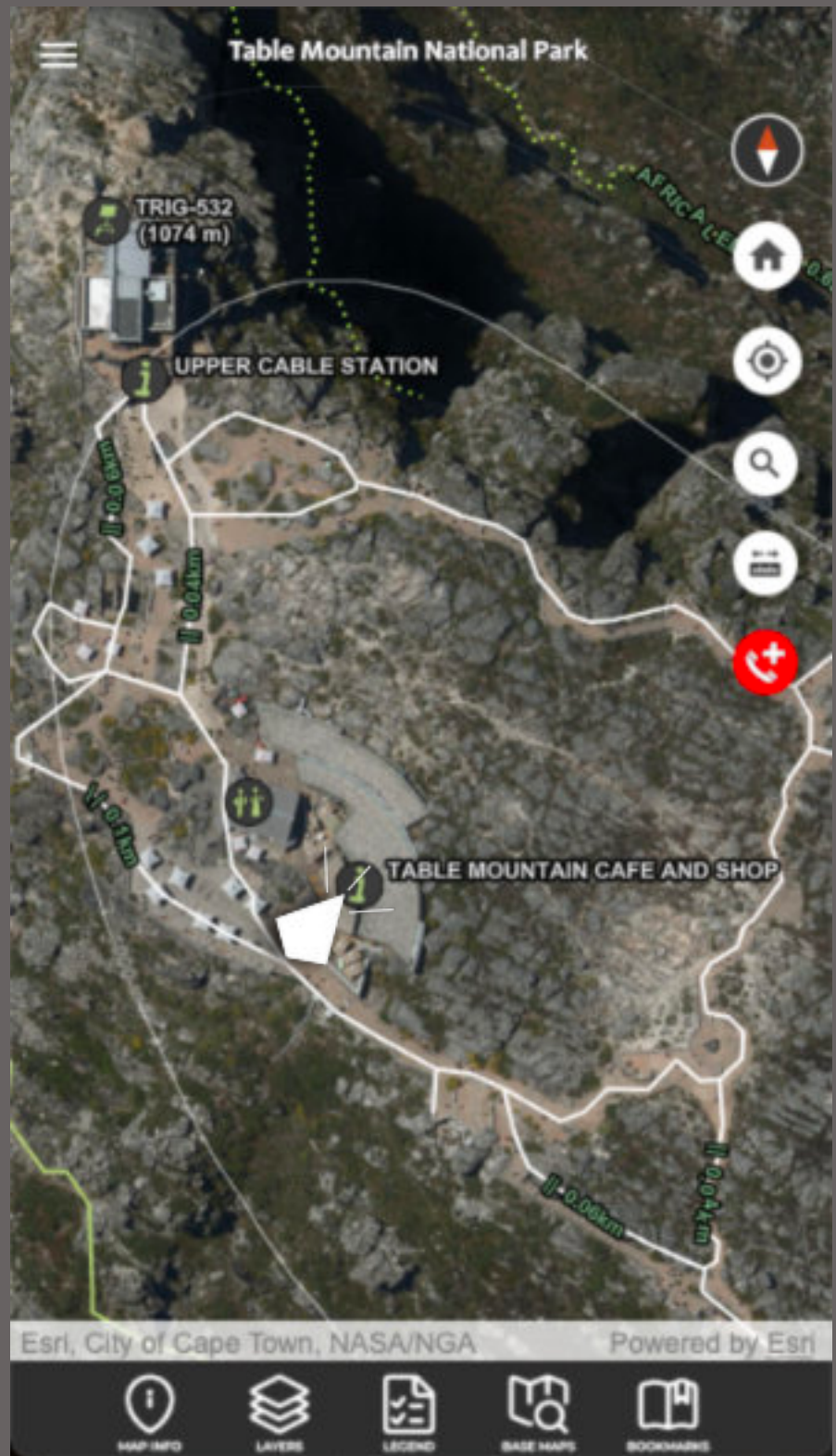


POINTS OF INTEREST DETAILS

1/2

CLICK ON A
POINT OF
INTEREST (POI) OF
TRAIL TO FIND
OUT MORE
ABOUT IT.

(CONTINUED ON
NEXT PAGE)



FOR FULL DETAILS
VISIT [FORGESA.COM/
USING-FORGE-MAPS](https://forgesa.com/using-forge-maps)

POINTS OF INTEREST DETAILS

POI DETAILS INCLUDES:

- NAME:

THE OFFICIAL NAME OF POI (IF KNOWN).

- CATEGORY:

TYPE OF POI - SEE MAP LEGEND FOR FULL LIST.

- ALTITUDE

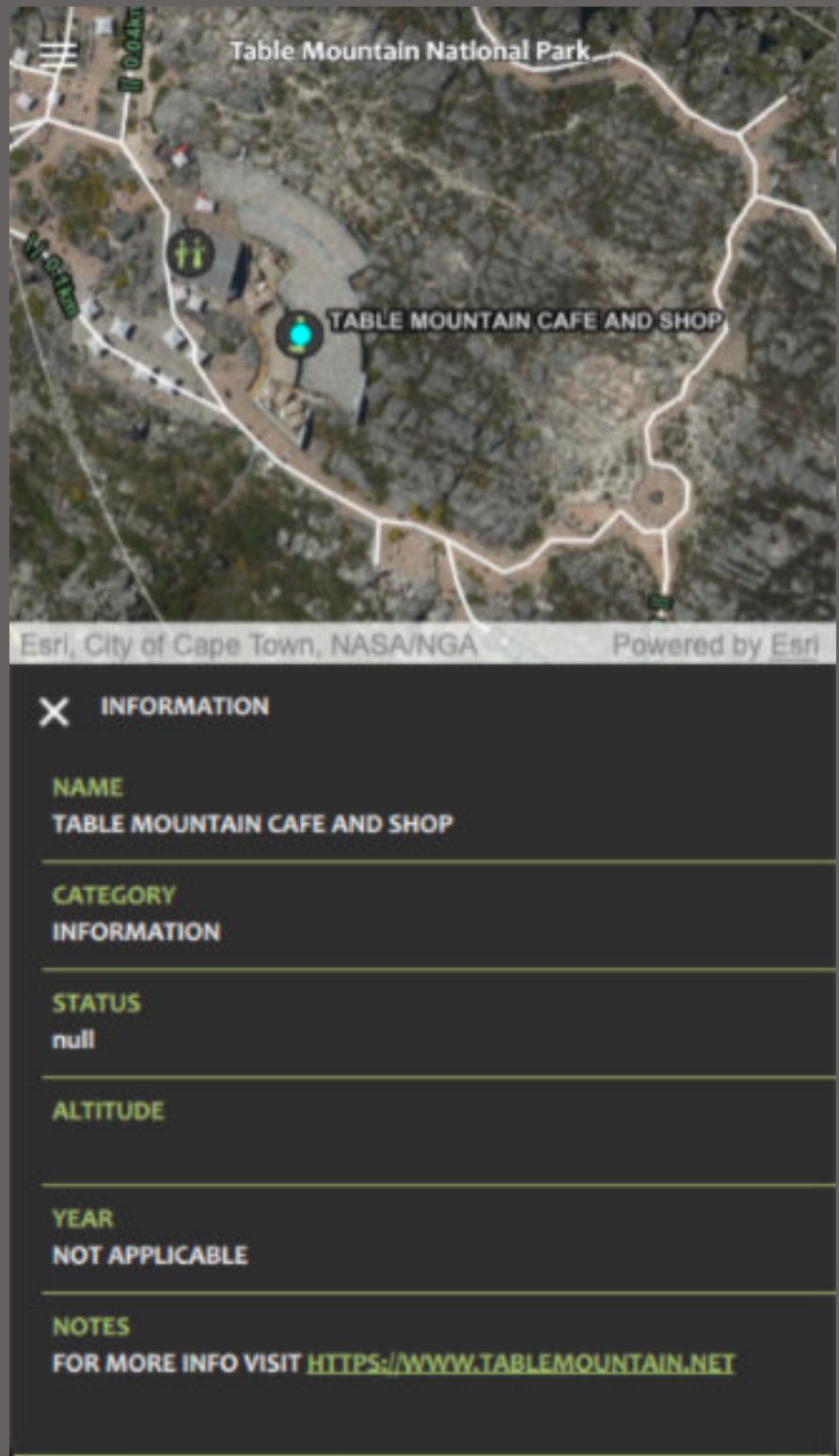
HEIGHT ABOVE SEA LEVEL (IN METERS), IF APPLICABLE.

- YEAR

APPLICABLE YEAR OF HISTORICAL RELEVANCE.

- NOTES

ADDITIONAL USEFUL INFORMATION.

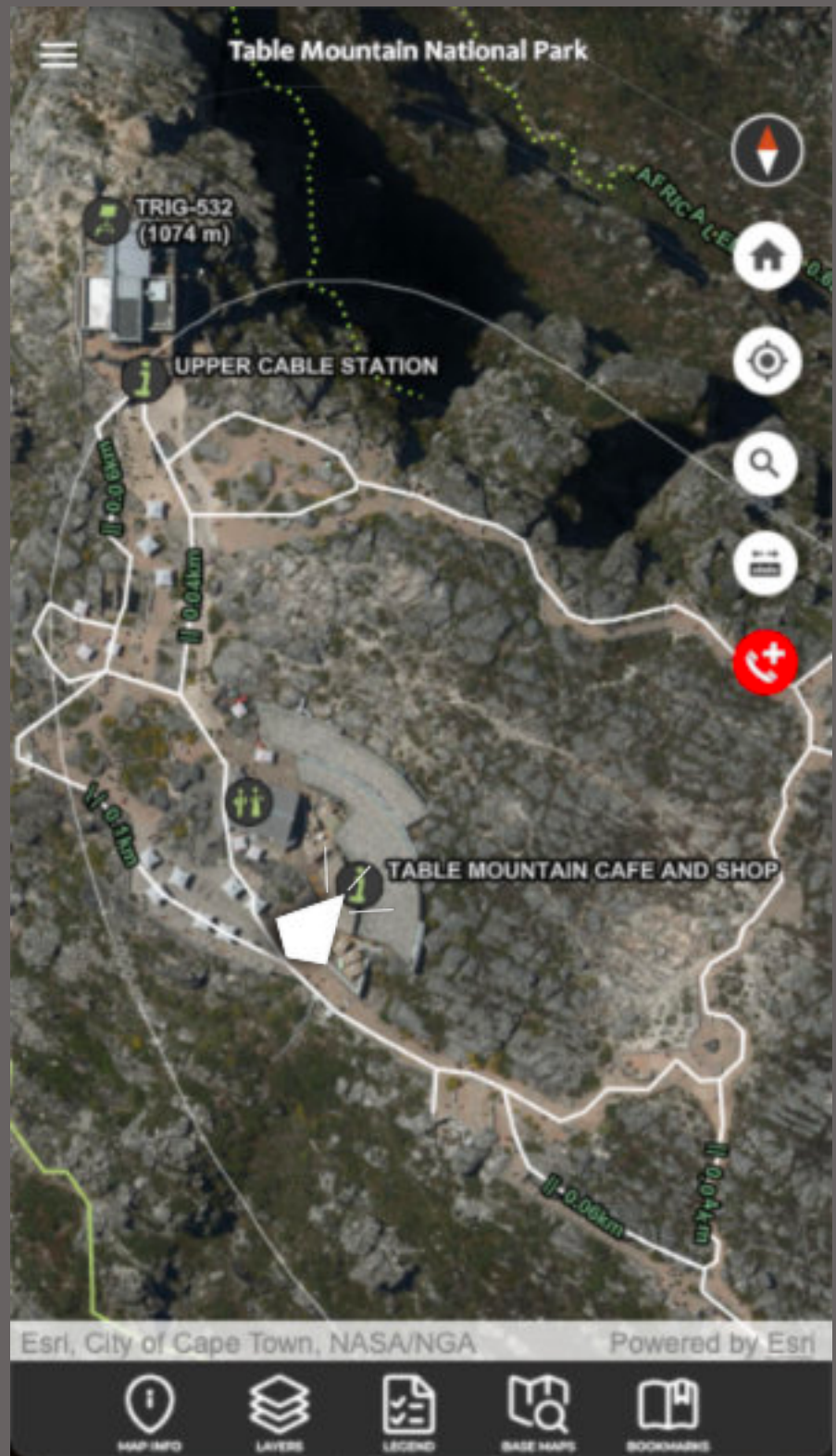


POINTS OF INTEREST DETAILS

1/2

CLICK ON A
POINT OF
INTEREST (POI) OF
TRAIL TO FIND
OUT MORE
ABOUT IT.

(CONTINUED ON
NEXT PAGE)



FOR FULL DETAILS
VISIT [FORGESA.COM/
USING-FORGE-MAPS](https://forgesa.com/using-forge-maps)

POINTS OF INTEREST DETAILS

POI DETAILS INCLUDES:

- NAME:

THE OFFICIAL NAME OF POI (IF KNOWN).

- CATEGORY:

TYPE OF POI - SEE MAP LEGEND FOR FULL LIST.

- ALTITUDE

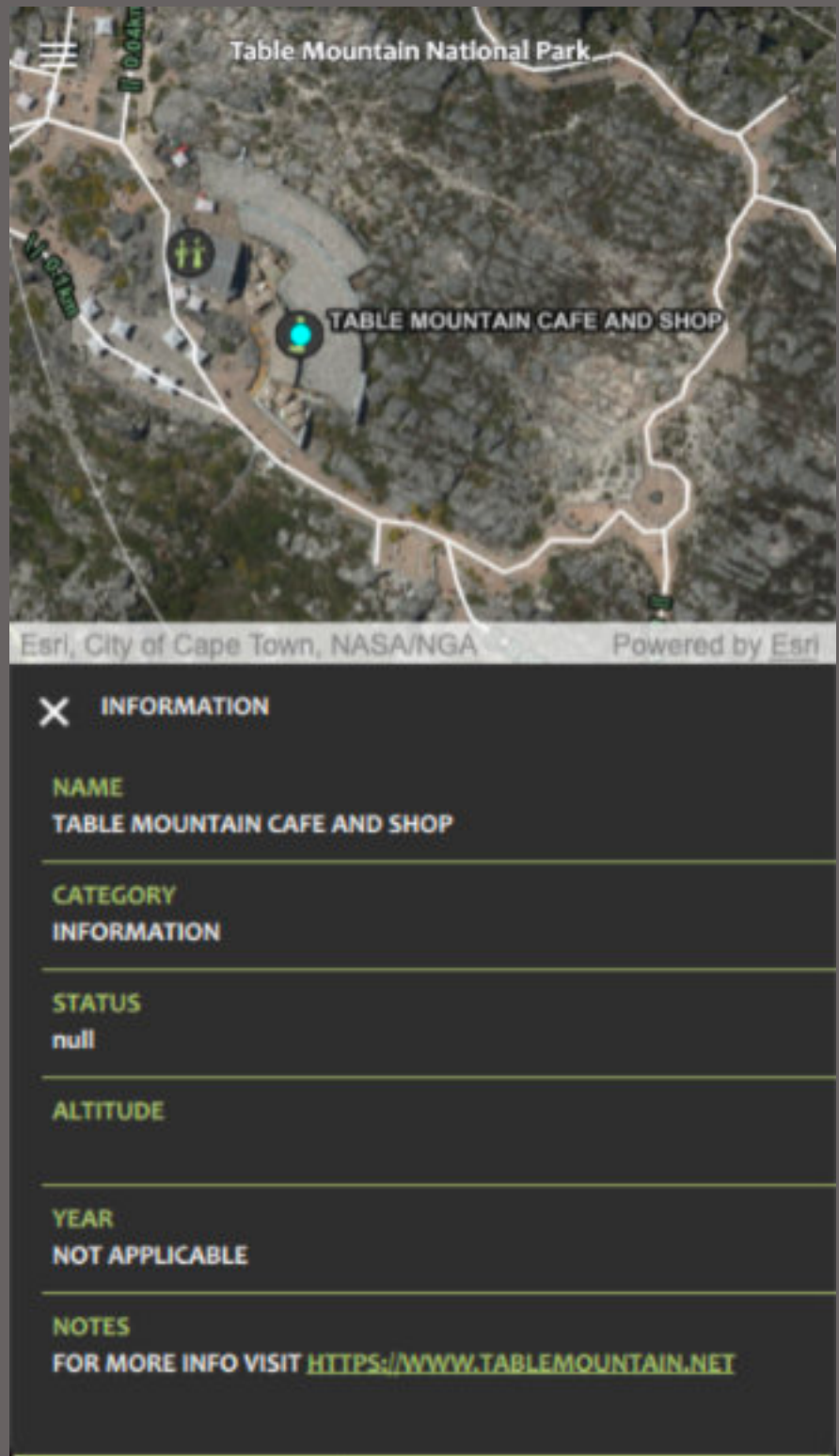
HEIGHT ABOVE SEA LEVEL (IN METERS), IF APPLICABLE.

- YEAR

APPLICABLE YEAR OF HISTORICAL RELEVANCE.

- NOTES

ADDITIONAL USEFUL INFORMATION.





FORGE

FIND YOUR PATH. EXPLORE MORE.



 forgesa.com

 [@forge_sa](https://www.instagram.com/@forge_sa)

MADE IN MZANSI