

# **FORGE APP** **TUTORIAL**

*A GUIDE TO:*

**1. MAP TOOLS**

**2. ACCESSING OFFLINE  
MAPS**

**3. TRAIL SEGMENT  
DETAILS**

**4. POINT OF INTEREST  
DETAILS**

# 1. MAP TOOLS

1/3

## ALIGN MAP NORTH

AUTOMATICALLY ORIENTATE MAP NORTH.



## RETURN TO HOME

AUTOMATICALLY ZOOM TO THE DEFAULT VIEW OF THE MAP.



## LOCATE TO CURRENT POSITION

SHOW AND CENTERS YOUR SCREEN TO YOUR CURRENT GPS LOCATION.



## SEARCH

FIND SPECIFIC TRAILS, TRAILHEADS AND POINTS OF INTEREST.



## MEASURE TOOL

DETERMINE A DISTANCE, AREA OR GET THE EXACT CO-ORDINATES OF A LOCATION.



## CALL EMERGENCY SERVICES

OPEN A LIST OF RELEVANT EMERGENCY CONTACTS AND CALL DIRECTLY FROM THE MAP.



## REPORT TRAIL ISSUES

SUBMIT OBSERVED TRAIL ISSUES SO WE CAN UPDATE OUR MAPS, THE COMMUNITY AND AUTHORITIES.

# 1. MAP TOOLS

2/3



MAP INFO

## MAP INFORMATION

INCLUDING:

RESERVE DESCRIPTION,

OPENING HOURS,

ENTRANCE FEES,

FACILITIES AND CONTACT INFORMATION,

LINK TO RESERVE WITH GOOGLE MAPS.



LAYERS

## LAYERS

TOGGLE THE VISIBILITY OF DIFFERENT MAP ELEMENTS, INCLUDING SPECIAL LAYERS SUCH AS DOG WALKING AND MOUNTAIN BIKING.

RLMUA, Earthstar Geographics, Esri, ... Powered by Esri



MAP INFO



LAYERS



LEGEND



BASE MAPS



BOOKMARKS

# 1. MAP TOOLS

3/3



LEGEND

## LEGEND

DESCRIPTION OF POINTS-OF-INTEREST, TRAIL TYPES AND WARNINGS.



BASE MAPS

## BASE MAP

CHOOSE FROM A LIBRARY OF BACKGROUND MAPS.



BOOKMARKS

## BOOKMARKS

ZOOM INTO PLACES OF INTEREST.

RLMUA, Earthstar Geographics, Esri, ... Powered by [Esri](#)



MAP INFO



LAYERS



LEGEND



BASE MAPS



BOOKMARKS



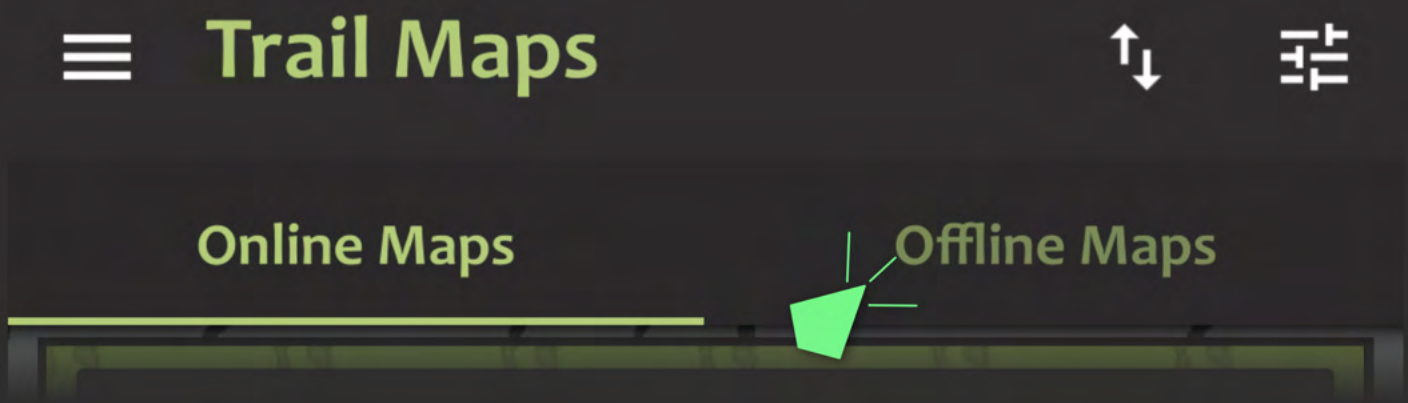
# 2. ACCESSING OFFLINE MAPS

FROM THE TRAIL MAPS FILTER PAGE:

1. EXIT THE FILTER PAGE.



2. NAVIGATE TO 'OFFLINE MAPS'.



**NOTE: YOUR DEVICE WILL BE FORCED TO STAY AWAKE DURING THE DOWNLOAD PROCESS. DO NOT MINIMIZE THE FORGE APP OR TURN OFF YOUR SCREEN.**

# 2. ACCESSING OFFLINE MAPS

3. SELECT YOUR DESIRED MAP IN THE 'AVAILABLE TO DOWNLOAD' TAB AND CONFIRM DOWNLOAD.

☰ Trail Maps



Online Maps

Offline Maps

^ Available to Download

31

Jonkershoek Nature Reserve



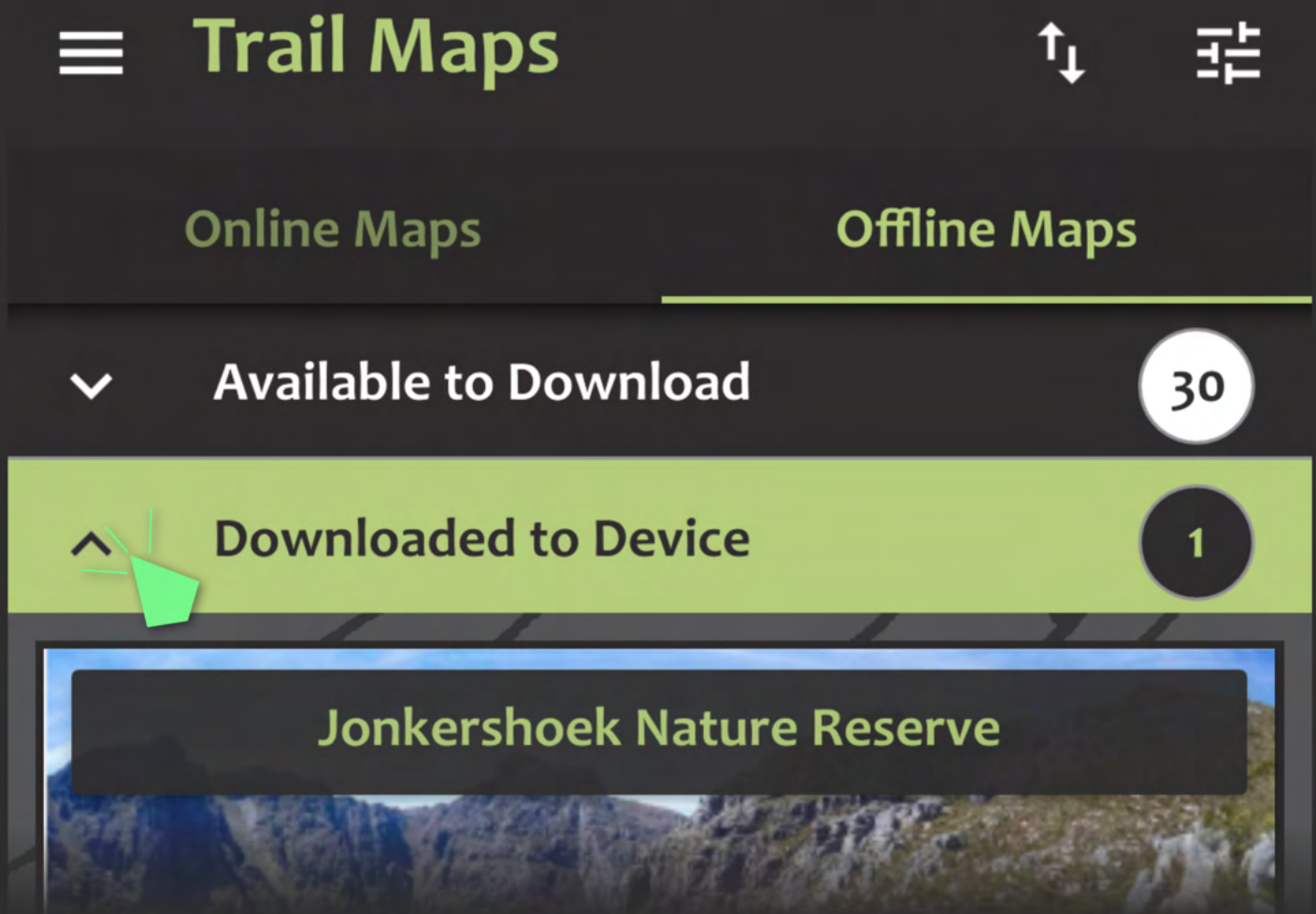
7.1mb





# 2. ACCESSING OFFLINE MAPS

4. ONCE DOWNLOAD IS COMPLETE THE MAP WILL BE AVAILABLE IN THE 'DOWNLOADED TO DEVICE' TAB.



5. YOU CAN NOW ACCESS YOUR DOWNLOADED MAP WITHOUT CELL-PHONE NETWORK UNDER 'DOWNLOADED TO DEVICE'.

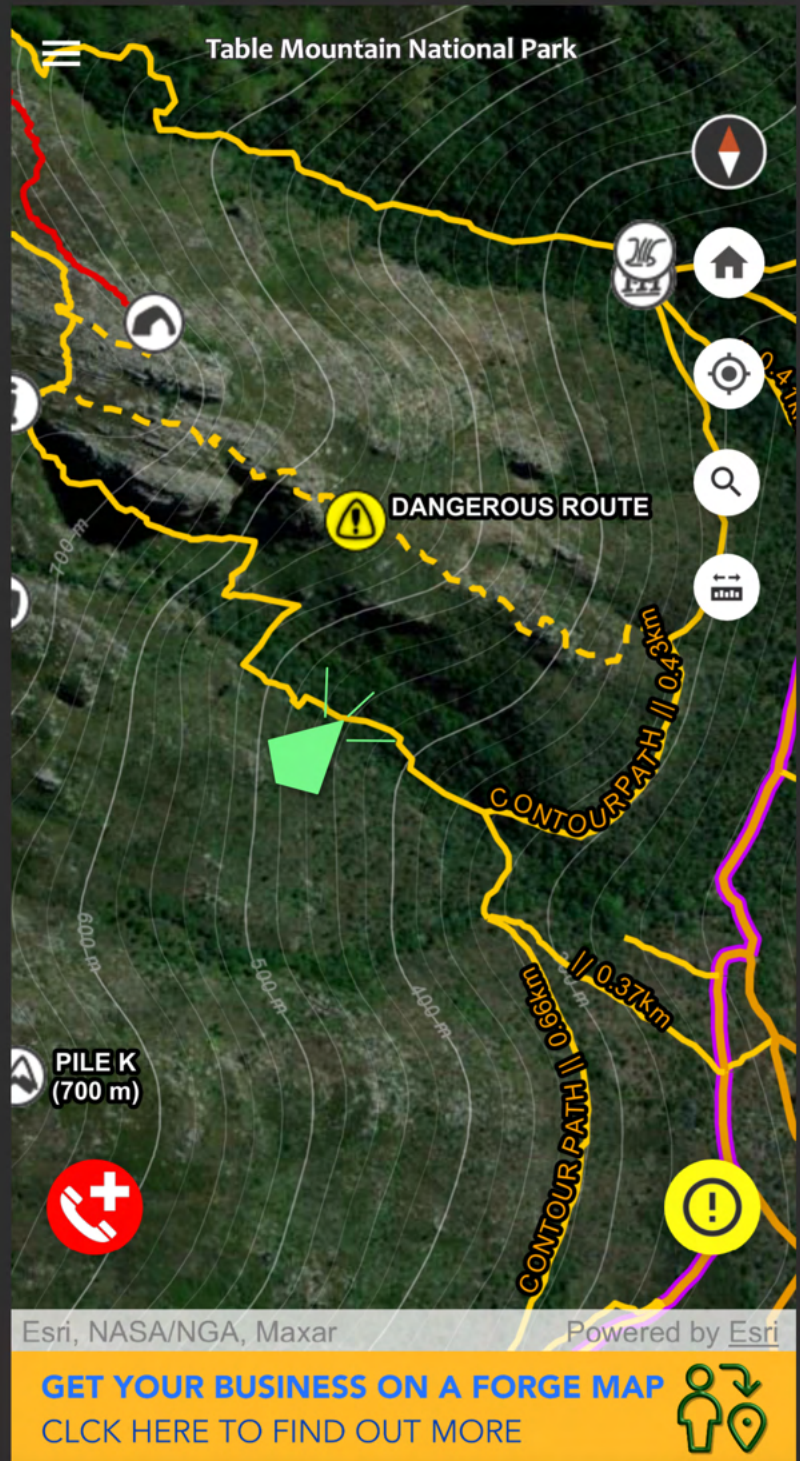
**NOTE: WHEN IN LOW-SIGNAL ENVIRONMENTS, OFFLINE MAPS WORK BEST IN AIRPLANE MODE.**

# 3. TRAIL SEGMENT DETAILS

1/4

CLICK ON A  
SEGMENT OF  
TRAIL TO FIND  
OUT MORE  
ABOUT IT.

(CONTINUED ON  
NEXT PAGE)



FOR FULL DETAILS  
VISIT [FORGESA.COM/  
USING-FORGE-MAPS](https://FORGESA.COM/USING-FORGE-MAPS)





# 3. TRAIL SEGMENT DETAILS

2/4

## TRAIL DETAILS INCLUDES:

- NAME:

THE OFFICIAL NAME OF THE PATH/TRAIL (IF KNOWN).

- PATH STATUS:

- ROAD (PAVED / SAND);

- PATH (PAVED / SAND / BOARDWALK);

- ROCK SCRAMBLE

- WAY-TO-GO (I.E. NOT OFFICIAL OR DISCERNIBLE PATH);

- CLOSED / NO ENTRY.

- DIFFICULTY:

- EASY;

- MODERATE;



### ✕ INFORMATION

**NAME**

NURSERY RAVINE

**PATH STATUS**

PATH (SAND)

**DIFFICULTY**

DIFFICULT

**DOG FRIENDLY**

NO

**MOUNTAIN BIKING**

NO

---

# 3. TRAIL SEGMENT DETAILS

3/4

## • DIFFICULTY CONT.

- STRENUOUS;
- DIFFICULT (VERY STEEP);
- EXTREME (EXCEPTIONALLY STEEP);
- TECHNICAL - A (VERTICAL OR NEAR-VERTICAL, NO ROPES REQUIRED. E.G. WOODEN/CHAIN LADDERS);
- TECHNICAL - B (VERTICAL OR NEAR VERTICAL, USE OF ROPES AND PROTECTIVE EQUIPMENT REQUIRED BY MOST) ;
- TECHNICAL - X (ROCK CLIMBING OR ABSEILING, RECOMMENDED FOR EXPERIENCED MOUNTAINEERS ONLY).



## ✕ INFORMATION

### NAME

NURSERY RAVINE

### PATH STATUS

PATH (SAND)

### DIFFICULTY

DIFFICULT

### DOG FRIENDLY

NO

### MOUNTAIN BIKING

NO





# 3. TRAIL SEGMENT DETAILS

4/4

- **DOG FRIENDLY:**

- YES (PERMIT MAY BE REQUIRED);
- NO (NOT RECOMMENDED AND/OR ALLOWED);
- SPECIAL PERMIT (AS GRANTED BY MANAGEMENT AUTHORITY IN SPECIAL WILDERNESS ZONES).

- **MOUNTAIN BIKING:**

- YES (NO PERMIT REQUIRED);
- NO;
- PERMIT REQUIRED.



✕ INFORMATION

**NAME**  
NURSERY RAVINE

**PATH STATUS**  
PATH (SAND)

**DIFFICULTY**  
DIFFICULT

**DOG FRIENDLY**  
NO

**MOUNTAIN BIKING**  
NO

---

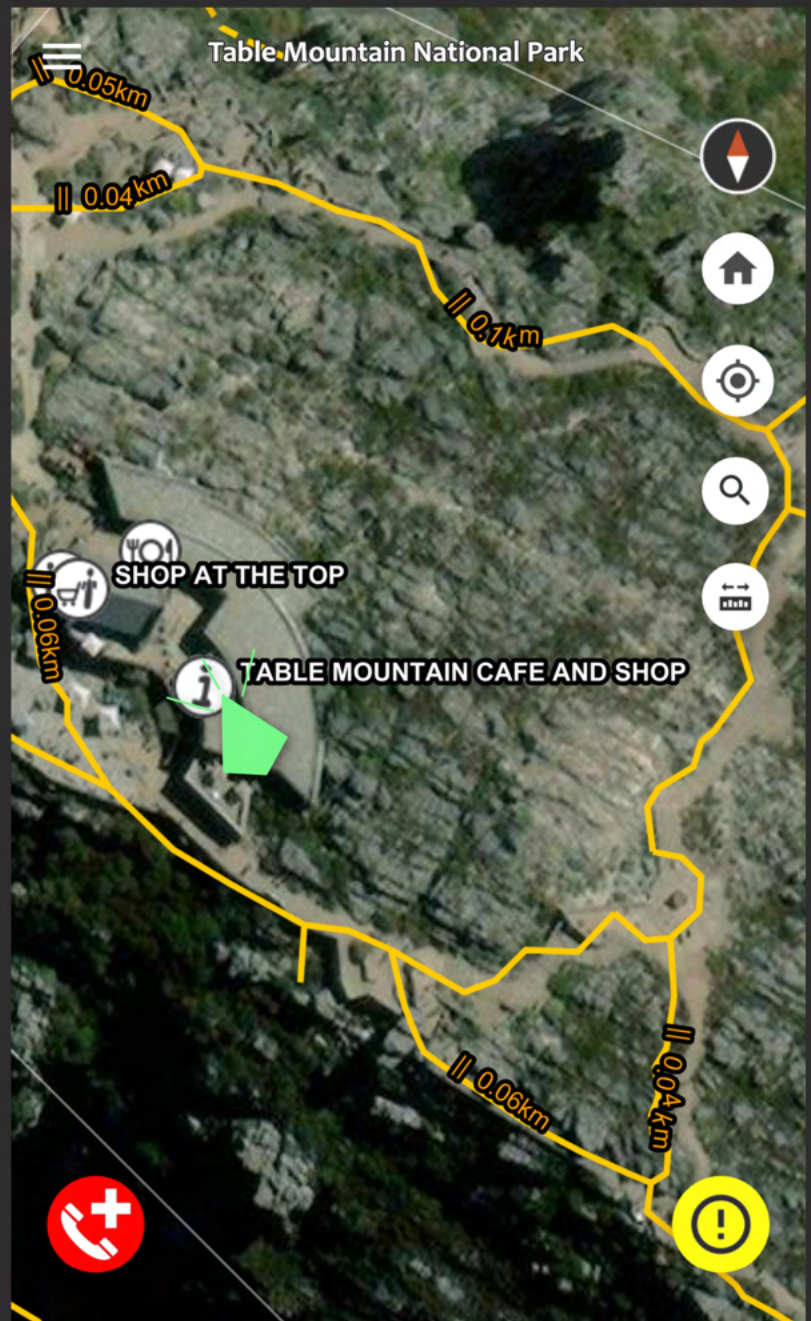


# 4. POINTS OF INTEREST DETAILS

1/2

CLICK ON A POINT OF INTEREST (POI) OR TRAIL TO FIND OUT MORE ABOUT IT.

(CONTINUED ON NEXT PAGE)



Esri, NASA/NGA

Powered by Esri

FOR FULL DETAILS VISIT  
[FORGESA.COM/USING-FORGE-MAPS](https://FORGESA.COM/USING-FORGE-MAPS)

GET YOUR BUSINESS ON A FORGE MAP  
CLICK HERE TO FIND OUT MORE



MAP INFO



LAYERS



LEGEND



BASE MAPS



BOOKMARKS

# 4. POINTS OF INTEREST DETAILS

## POI DETAILS INCLUDES:

- **NAME:**

THE OFFICIAL NAME OF POI (IF KNOWN).

- **CATEGORY:**

TYPE OF POI - SEE MAP LEGEND FOR FULL LIST.

- **ALTITUDE:**

HEIGHT ABOVE SEA LEVEL (IN METERS), IF APPLICABLE.

- **YEAR:**

YEAR OF HISTORICAL RELEVANCE, IF APPLICABLE.

- **NOTES:**

ADDITIONAL USEFUL INFORMATION.



### ✕ INFORMATION

#### NAME

TABLE MOUNTAIN CAFE AND SHOP

#### CATEGORY

INFORMATION

#### NOTES

FOR MORE INFO VISIT [HTTPS://WWW.TABLEMOUNTAIN.NET](https://www.tablemountain.net)





# FORGE

**FIND YOUR PATH. EXPLORE MORE.**

**YOUR FEEDBACK MEANS THE WORLD TO US!  
RATE AND REVIEW FORGE ON YOUR APP STORE.**



Download on the  
**App Store**



GET IT ON  
**Google Play**

 [forgesa.com](https://forgesa.com)

 [@forge\\_sa](https://www.instagram.com/@forge_sa)

**MADE IN MZANSI**

